

## \*Features:

- HALED patent optics design, similar to halogen light effect
- Easy and quick installation
- Ultra-thin design, with a height of only 31.4mm
- $PF > 0.85$ , flicker free, follows new ErP
- Dimmable or Dim to warm halogen function by triac dimmer
- 4.8W HALED downlight replace 50W halogen lamp
- CRI 95,  $R9 > 90$
- Low UGR
- Peak luminous intensity is 1.25 times of parallel products
- Suitable for all kinds of unenclosed luminaire
- Metal structure, excellent heat dissipation
- Lifespan 40,000 hrs, 5 years warranty
- High energy efficiency



CE RoHS ErP✓

Surface ring: White

## Applications

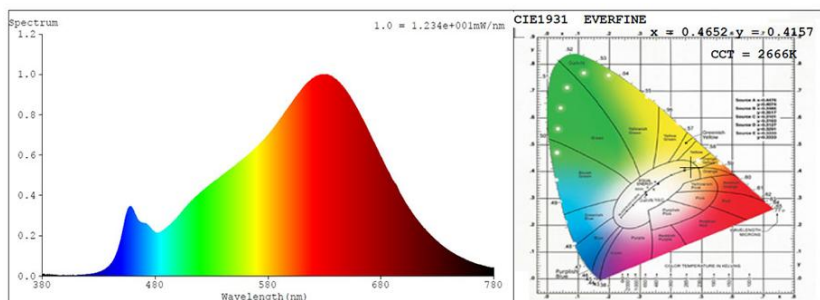
- Residential application and hotel lighting.
- Commercial lighting like restaurants, bars, cafes, etc.

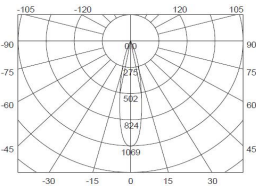
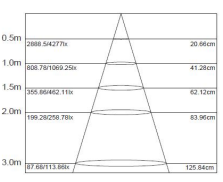
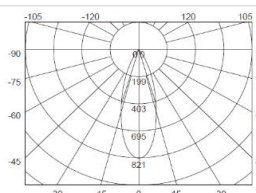
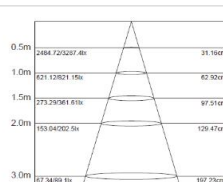
## Technical data

Part No.	Type of installation
WCK002W05-49031/49036	Double wiring
Electrical specifications	
Wattage (W)	4.8W
AC input voltage (V)	AC200V-240V
Frequency (Hz)	50/60Hz
Flicker metric PST	0.023
Total harmonic distortion (THD)	27%
Max. no. of lamps on B16A circuit breaker	420
Max. no. of lamps on C16A circuit breaker	420
Photometric specifications	
Color temperature (CCT)	2700K-2100K
Chromaticity coordinate (x/ y)	2700K: 0.459/ 0.412 2100K: 0.520/ 0.415
Useful luminous flux (lm)	350lm $\pm$ 5%
UGR	$\leq 19$

Power factor	$> 0.75$
Current	27mA
DC output voltage (V)	-
Stroboscopic effect metric SVN	0.25
Dimmable	Dim to warm
Max. no. of lamps on C10A circuit breaker	240
CRI/ R9	95/ 90(Min.)
Standard deviation of colour	$\leq 5$ SDCM
Luminous efficiency (lm/W)	86lm/ W (ERP)

## Photometric Information



EAN	Colour	Beam angle	Peak Luminous intensity	
49036	White	24°	1050cd	 
49031	White	36°	800cd	 

## Mechanical specifications

Housing material	Aluminium
Optical cover/ lens material	Al Reflector+PC+Glass
Width/ diameter	85mm
Product weight	120g

## Lifespan

Number of switching cycles	100,000-
L80/B10 service life at 25°C	40,000 hrs
Warranty	5 Years

## Application parameters

Working temperature range	-20~+50°C
---------------------------	-----------

## Package

Individual package length	100mm
Individual package height	45mm

Housing Colour	Titanium
Length/ diameter	68mm
Height	31.4mm

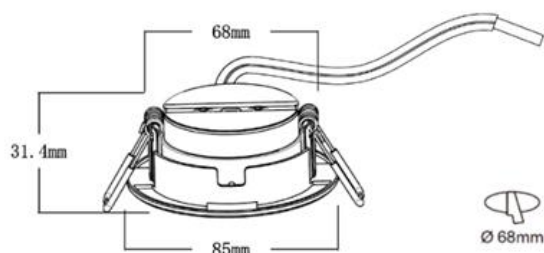
L70/B50 service life at 25°C	50,000 hrs
L90/B10 service life at 25°C	20,000 hrs

Storage temperature range	-20~+70°C
---------------------------	-----------

Shipping box height	575mm
Shipping box height	245mm

Individual package width	90mm	Shipping box width	480mm
Gross weight (single item)	120g	Packaging unit	100pcs
Driver	Internal	Gross weight (Shipping box)	14kgs

## Technical Drawings (mm)



Note: Height between the module and roof should be no less than 10cm for heat dissipation purpose for installation.

## Package



Inner Box 100\*90\*45mm



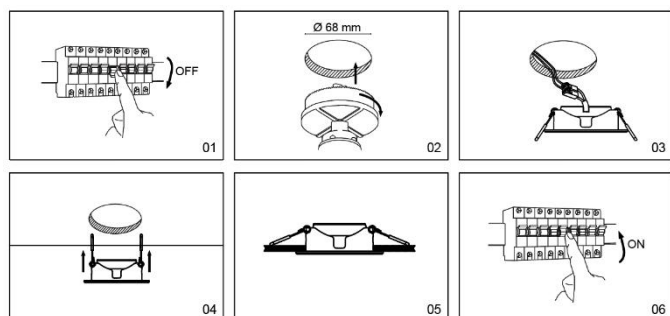
Inner Carton 465\*110\*110mm(10PCS)



Shipping Carton 575\*480\*245mm(100PCS)

## Installation /Mounting:

Please read the entire instruction manual before using the product and reserve it for future reference. We reserve the right for any error in text or image and any necessary change made to technical data. If you have any question regarding technical problems, please contact our Customer Services.



## Cautions:

- Don't touch the lamp when it is lighted
- Don't use it in enclosed luminaire
- Power off before replacement
- Do not in violation of any fire regulations when using
- Consult professional electricians for technical support
- If the cable is damaged, it must be replaced by the manufacturer and its service agent, or qualified person in order to avoid hazards.